

From Local Roots to National Impact:

Blazing the Trail to Cervical
Cancer Elimination

9:10 AM – 10:45 AM



From Local Roots to National Impact: Blazing the Trail to Cervical Cancer Elimination



Moderator
Tamika Felder
Cervivor



Moderator
Francisco García, MD
University of Arizona



Sarah Comstock, MSW
American Cancer Society



Erin Kobetz Kerman, PhD
Sylvester Comprehensive Cancer
Center, University of Miami



Cara McCarthy, MPH
LCMC Health Cancer Center,
Louisiana State University



Erika Thompson, PhD
University of Texas at San Antonio
School of Public Health



Amanda Compadre, MD
Knight Cancer Institute, Oregon
Health & Science University



Bringing cancer prevention into communities.

Global Collaboration, Local Impact: ACS' Role in Global Cervical Cancer Elimination



Disclosures

I have no actual or potential conflict of interest in relation to this program/presentation.

Cervical Cancer

The global toll of cervical cancer today



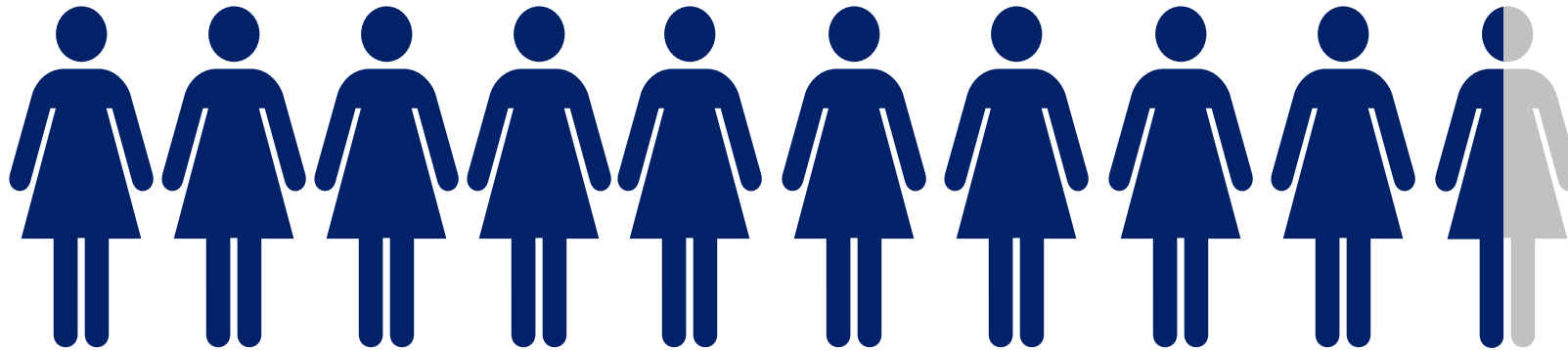
350,000

women die annually from cervical cancer

Source: WHO, 2022

Where We Focus: Those at Greatest Risk

94% of all cervical cancer deaths occur in low- and middle-income countries (LMICs)



“More than any other cancer, cervical cancer reflects striking global health inequity.”

Agosti & Goldie
New England Journal of Medicine

For the First Time in History... We Can Eliminate a Cancer

WHO Global Strategy for the Elimination of Cervical Cancer

90%

of girls fully vaccinated
with the HPV vaccine by
the age of 15

70%

of women screened using
a high-performance test
by the age of 35, and
again by the age of 45

90%

of women identified with
cervical disease receive
treatment (90% of
women with precancer
treated; 90% of women
with invasive cancer
managed).

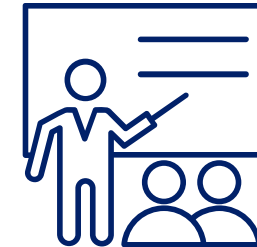
HPV Vaccination

Local to Global

Reaching parents through **health authorities & health insurance companies** in **Colombia**



Activating **medical societies** to reach **physicians** in **India**



Partnership with the **International Pediatrics Association** to reach **healthcare workers worldwide**



Stronger systems, earlier prevention and detection, less suffering

Screening

External Organization

Technical support and funding

Local Cancer Organizations

Implementation & cancer expertise

Government NCD Programs

Leadership buy-in & staff support at PHCs



**SP Seva Sansthan
Foundation**
Rajsamand District



Tresna Foundation
Kheda District



Stronger systems, earlier prevention and detection, less suffering

Treatment & Navigation

Local to Global

BEACON: Patient Navigation Capacity Development
EQUIPPED: Patient Education
Health System Quality Improvement:
Treat the Pain & ChemoSafe



SPARK:
Country Level Patient Navigation



CCAE HPV Vaccination Learning Series

Equipping Civil Society Organizations to Accelerate the Progress Toward Cervical Cancer Elimination



+63

63 percentage point increase in participants strongly agreeing they can develop HPV vaccination projects using behavioral science from pre- (14%) to post-series (77%)

*The process of going through the workbook to identify a specific target population, behavioral barriers, and solutions was incredibly helpful. I will apply this strategy while designing future interventions. **Learning Series Participant***

ACS Global Programs



**International Pediatrics Association HPV
Vaccination Training**



**Follow CCAE
on LinkedIn**



**Follow ACS Global
on LinkedIn**



**ACS Prevent Global HPV Cancers
Toolkits & Resources**



Sign Up for CCAE Emails



Coming soon - Global Storytelling for Impact Toolkit



Thank You

Florida Forward: An Update on Cervical Cancer Elimination Efforts

Erin Kobetz-Kerman, PhD, MPH

John K. and Judy S. Schulte Senior Endowed Professor in Cancer Research

Vice President for Health Promotion and Chief Wellbeing Officer

Associate Director for Community Outreach and Engagement, Sylvester Comprehensive Cancer Center

Co-Director, Clinical Translational Science Institute

Chair, CCRAB




**Florida Cancer Control
& Research Advisory Council**



Disclosures

I have no disclosures to report.

Florida Cancer Plan – Cervical Cancer Elimination



PREVENTION AND RISK REDUCTION
CONTINUED

OBJECTIVE 5.8
By December 2030, sustain or increase funding for comprehensive tobacco control programs with programmatic allocations that are consistent with CDC best practices.

FUNDING

BASELINE	CURRENT CATEGORICAL FUNDING (2025)
	CDC BEST PRACTICES FOR CATEGORICAL FUNDING

TARGET CDC BEST PRACTICES FOR CATEGORICAL FUNDING
Data Source: FY15

STRATEGIES

- Educate Florida policy makers on the costs of tobacco use to the state's health, and the necessity for anti-tobacco messaging to the general public.
- Engage Florida cancer control key partners to cooperatively advocate for programmatic allocations.
- Engage key partners in activities that will achieve the goals of the Florida Tobacco Strategic Plan.

GOAL 6

Eliminate cervical cancer as a public health problem in Florida by increasing vaccination against human papillomavirus (HPV) and increasing cervical cancer screening.

with the HPV vaccination series.

BASELINE	59% UP TO DATE (2023)	TARGET	80% UP TO DATE

Data Source: FL SHOTS

STRATEGIES

- Strengthen provider recommendation using evidence-based communication.
- Implement school-based or school-linked vaccination partnerships with middle/high schools.
- Engage school systems (middle schools and high schools) to host HPV vaccine clinics and integrate HPV awareness into health education.
- Use reminder/recall systems via FL SHOTS to improve completion.

OBJECTIVE 6.2
By December 2030, increase the percentage of youth aged 13-17 years old who have completed the HPV vaccination series.

BASELINE	56.8% COMPLETED SERIES (2023)	TARGET	80% COMPLETED SERIES

Data Source: FL SHOTS

STRATEGIES

- Address access and equity in rural and underserved communities through mobile/extended-hour clinics.
- Conduct parent education campaigns emphasizing "HPV vaccination = cancer prevention."
- Build capacity of teachers, school nurses, staff, and Health Occupation Student Association (Operation Wipeout).

Florida Cancer Control & Research Advisory Council

18

Florida Cancer Plan targets emphasize:

- Increasing HPV vaccination uptake
- Improving HPV series completion
- Expanding evidence-based screening strategies
- Reducing access disparities

Source: Florida Cancer Control and Research Advisory Council (CCRAB).
Florida Cancer Plan 2026–2030. <https://www.ccrab.org/cancer-plan-2026-2030>

Florida Forward Committee

Prevention & Vaccination Strategies Committee



Susan Vadaparampil,
PhD, MPH
H. Lee Moffitt Cancer
Center & Research Institute
CCRAB



Jonathan Hickman,
PharmD
Medical Executive
Director Genentech

Diagnosis & Treatment Access Committee



Patricia P. Jeudin, MD
Sylvester Comprehensive
Cancer Center,
University of Miami



Matthew Schlumbrecht,
MD, MPH
Sylvester Comprehensive
Cancer Center,
University of Miami

Screening & Early Detection Committee



Tracy Milgram
Founder, BRCAStrong
CAC Member



Erin Kobetz, PhD, MPH
Sylvester Comprehensive
Cancer Center,
University of Miami
Chair, CCRAB

Data & Surveillance Committee



Ramzi G. Salloum, PhD
University of Florida Health
Cancer Center
Vice Chair, CCRAB



Janice Krieger, PhD
Mayo Clinic
Comprehensive
Cancer Center

Florida Forward Efforts



Vaccination

- a. Big Box Pharmacy Engagement
- b. CMS
- c. Pharmacy-based Vaccinations



Treatment

- a. Partnership with International Society of Gynecologic Cancer
- b. Coordination with Society of Gynecologic Oncology



Screening

- a. BCCEDP → HPV Self-Sampling
- b. BCCEDP Pilot with Paired Screening
- c. Roche, Teal Engagement
- d. Medicaid Managed Care Outreach



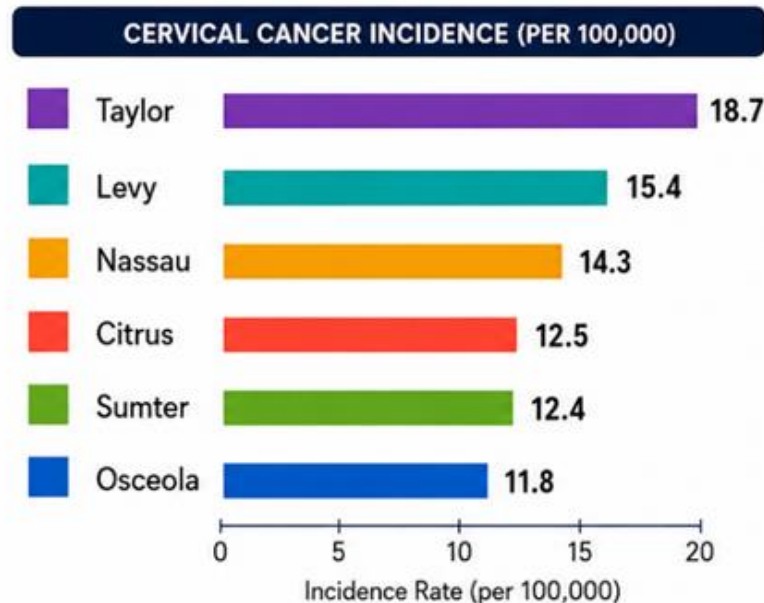
Data Infrastructure

- a. Rule change for HPV reporting

CERVICAL CANCER INCIDENCE (PER 100,000)

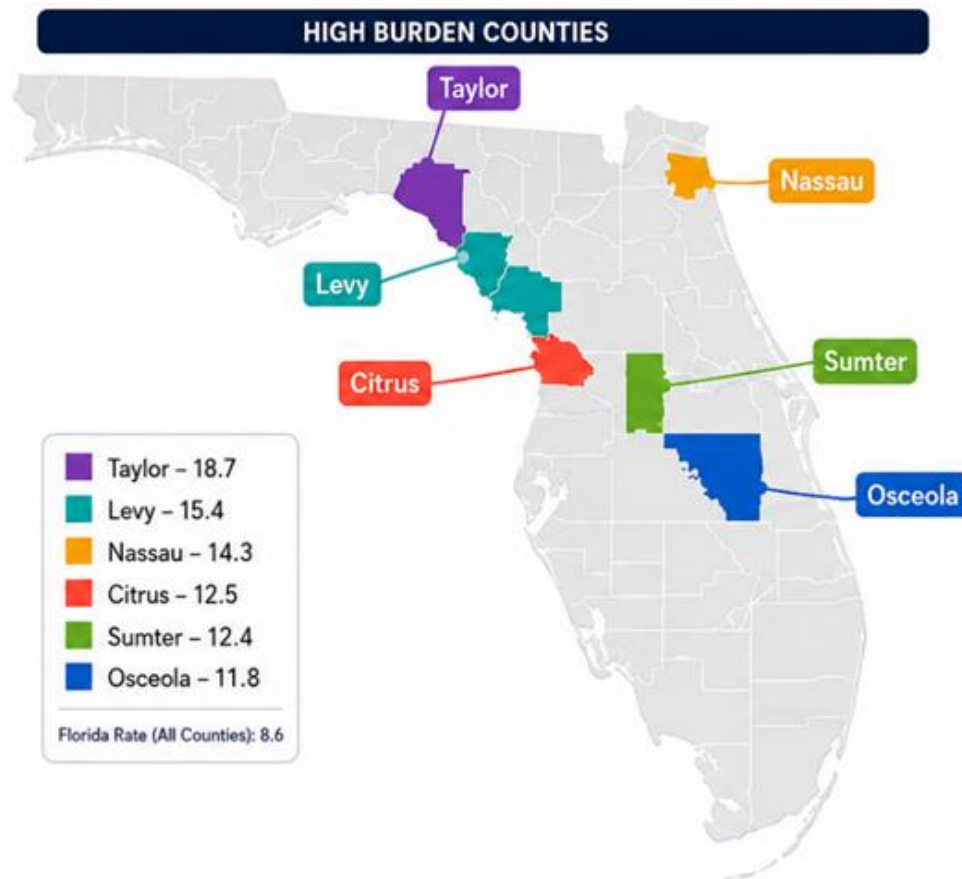
High Burden Counties in Florida

These six counties experience a higher incidence of cervical cancer compared to the Florida rate.



Targeted prevention, screening, and education efforts in these communities can help save lives.

Investing in prevention today leads to *healthier communities* tomorrow.



Source: Florida Cancer Data System (FCDS)
Incidence Years: 2017-2021

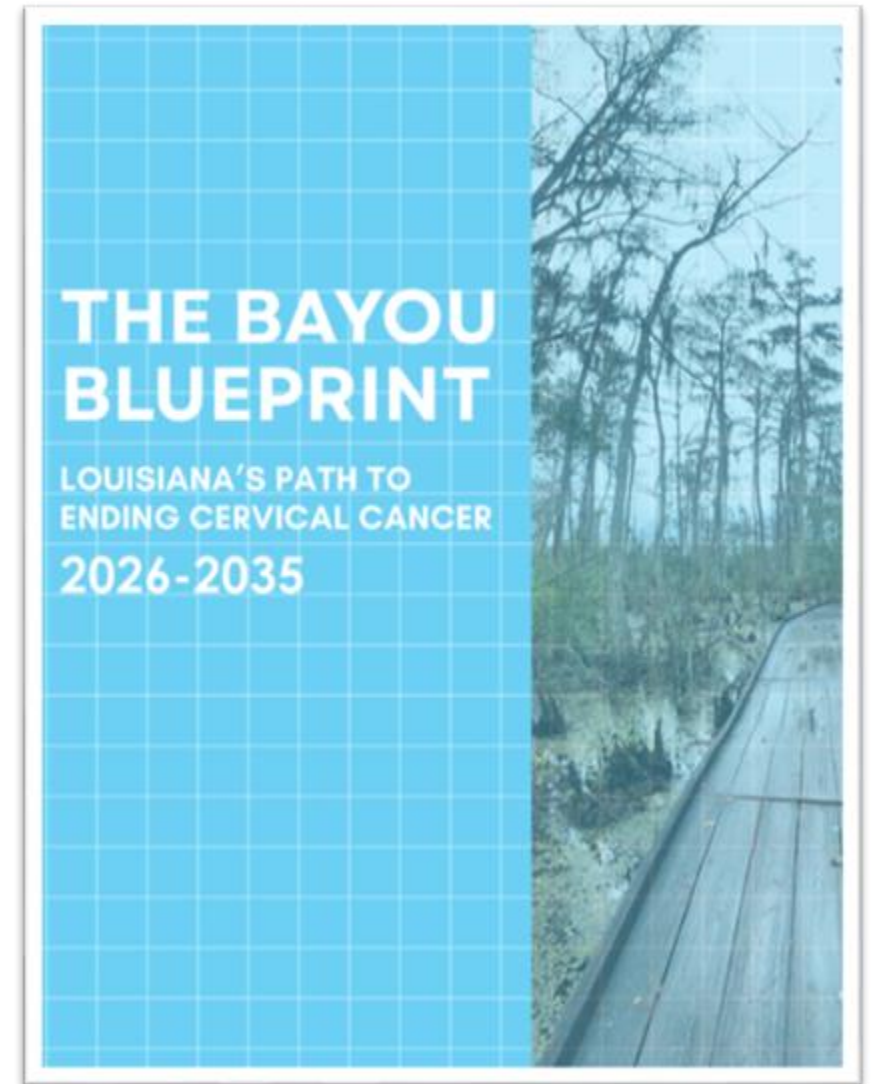


Thank You

A Blueprint for Cervical Cancer Elimination in Louisiana

Cara McCarthy, MPH

Community Outreach & Engagement Manager
LSU LCMC Health Cancer Center



LOUISIANA
CANCER PREVENTION &
CONTROL PROGRAMS

LouisianaCancer.org

LSU Health New Orleans | School of Public Health

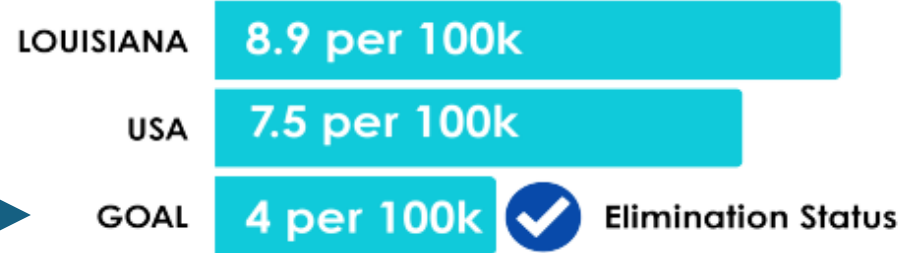
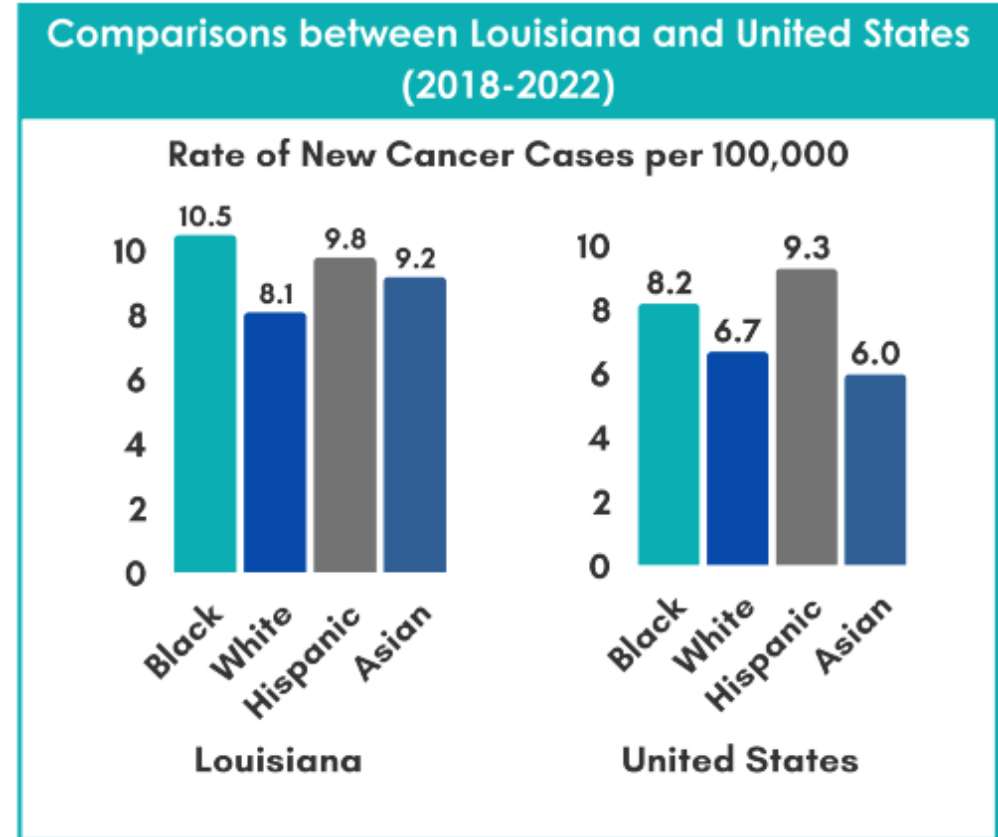
Disclosure

The development of the Bayou Blueprint was supported in part by the Centers for Disease Control and Prevention of the U.S. Department of Health and Human Services (HHS) as part of a financial assistance award. The contents are those of the author(s) and do not necessarily represent the official views of, nor an endorsement, by CDC/HHS, or the U.S. Government.

Where are we now?

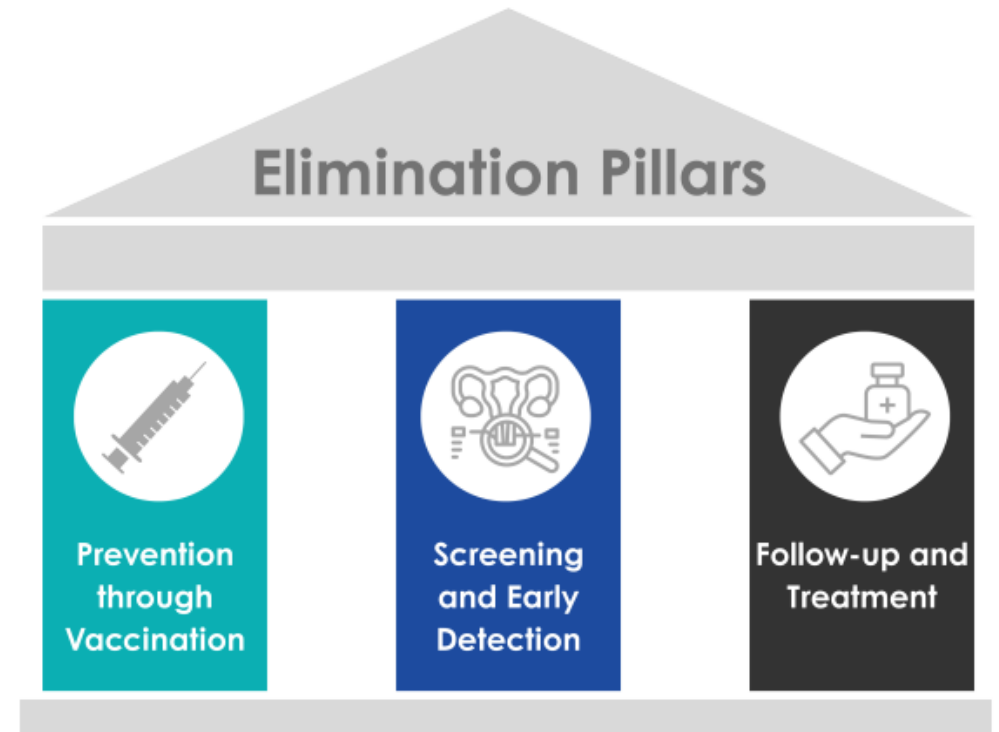
- **7th** in incidence
- **7th** in mortality
- **20th** in HPV vaccination
- **24th** in screening
- **64%** five-year relative survival rate
- Significant racial health disparities

Where do we want to be?



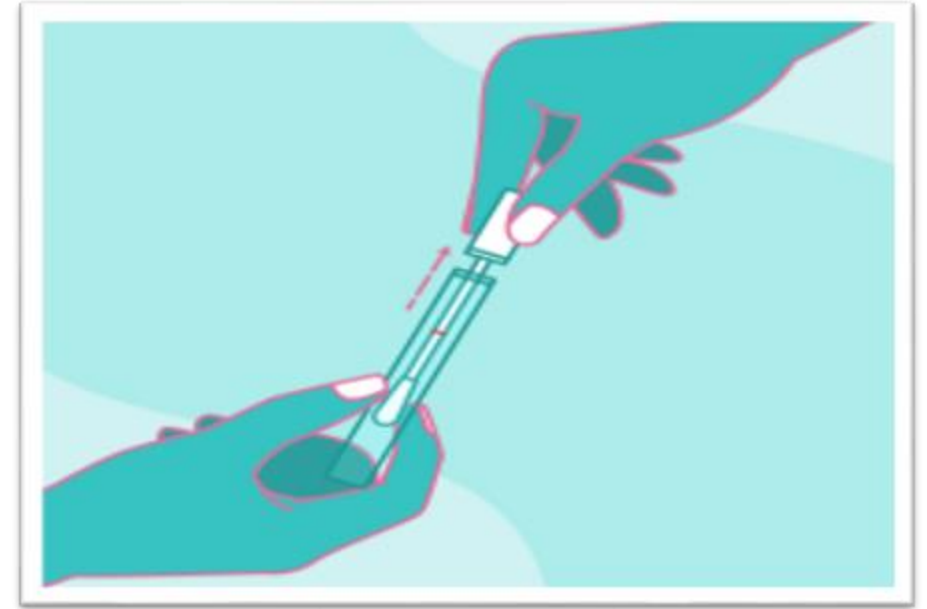
Developing the Plan

- Convened partners to align goals and set priorities
- Established workgroups for key pillars
- Workgroups collaboratively drafted plan sections
- Shared draft with summit attendees for input
- Incorporated feedback and finalized revisions



Next Steps

- Continuing education opportunities
 - Louisiana Primary Care Association Learning Collaborative
 - Advanced Practice Nurse colposcopy training
- HPV self-collected test expansion
- Community Health Worker partnerships
- Continued promotion of plan and partner engagement



Guiding Principles



Community Centered



Data & Evidence-Driven



Where Need is Greatest



Multi-Sector Collaboration



Thank You

Toward Cervical Cancer Elimination: Building the Texas Plan Together

Erika L. Thompson, PhD, CPH, FAAHB
University of Texas at San Antonio



DISCLOSURES

Received funding through the university for independent research and research consultation/speaking engagements from Merck related to HPV vaccination.

Received funding from Cancer Prevention & Research Institute of Texas, PCORI, NIH, and local non-profits.

Cancer Alliance of Texas

Priority Area Work Group: Cervical Cancer Elimination



Executive Committee

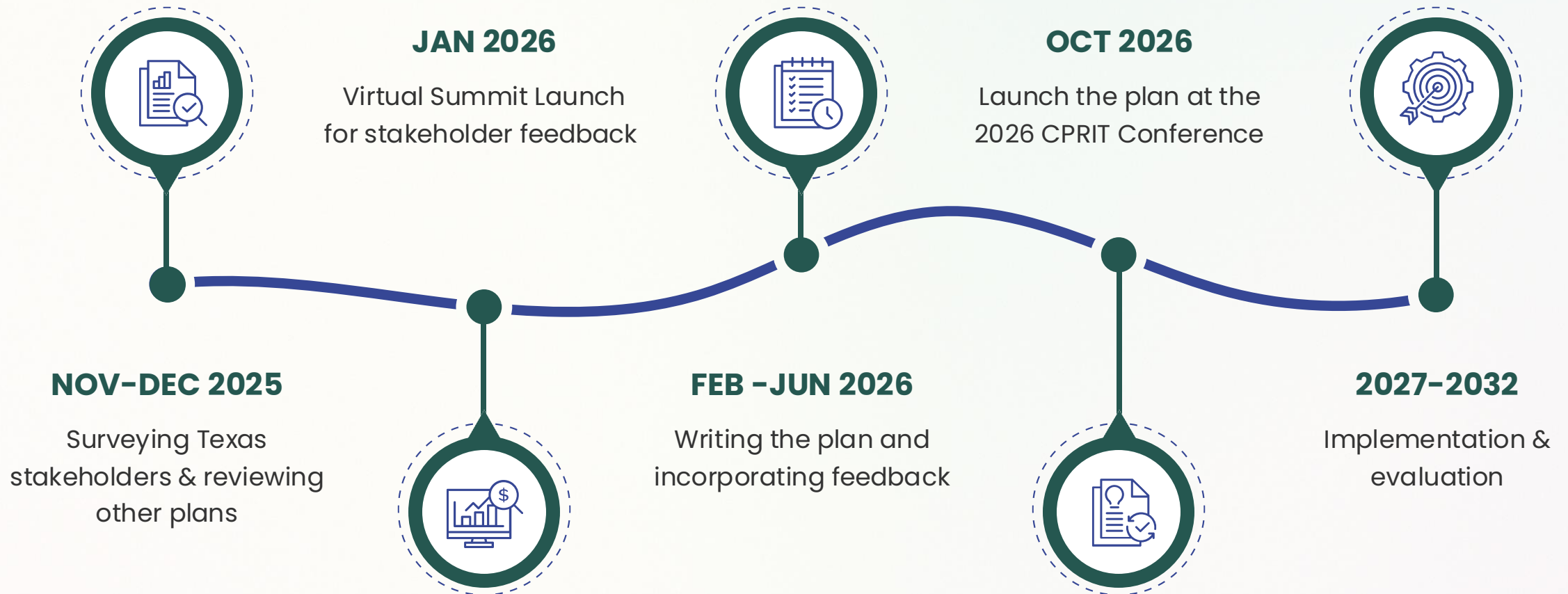


Akpevwe Ojaruega, UTHealth Houston
Alison Karns, UnitedHealthcare
Amanda Ivarra, Texas DSHS
Amanda Schmidt, Texas HHS Commission
Amy Gonzalez, Hidalgo County HHS
Andrea Semlow, Parkland Health and Hospital Systems
Angel Fuentes, Houston
Arica Brandford, Houston Methodist Neal Cancer Center
Brandee Roberts, Texas HHS Commission
Brent Magers, Texas Tech HSC
Candice Adame Estrada, Texas HHS Commission
Carlton Allen, CPRIT
Claire Newman, UTHealth Houston
Coralía Vazquez-Otero, UT San Antonio
Emily Adlparvar, UTHealth Houston
Erica Garcia, Texas DSHS
Erika Thompson, UT San Antonio
Erle Wynn, Merck
Estrella Pena, Texas Tech HSC El Paso
Grace Otitoju, Texas Tech HSC El Paso
Gwendolyn Jackson, Roy L. Jackson Community Outreach Center
Heather Johnson, MD Anderson
Hector Sanchez, MD Anderson
Idara Akpan, UNT Health
Irene Jose, The Immunization Partnership
Jan Catindig, UTHealth Houston
Jane Bolin, Texas A&M HSC

Jane Montealegre, MD Anderson
Jasmine Johnson, Dallas County Health and Human Services
Jennifer Molokwu, Texas Tech HSC El Paso
Jennifer Spencer, UT Austin
Jenny Khan, Native Healthcare Center
Jessica Calderon-Mora, UT Austin
Jessica Moore, Texas HHS Commission
Juana Gonzalez, UT San Antonio
Kaley Smith, Coastal Gateway Health Center
Kathleen Schmeler, MD Anderson
Kathryn Kundrod, MD Anderson
Kevin Aloysius, Legacy Community Health
Kirsten Eom, UT San Antonio
Kristen Rombach, American Cancer Society
Lara Savas, UTHealth Houston
Laura Ruiz-Martinez, Merck
Laura Wood, American Cancer Society
Leslie Brunette, Merck
Lindy McGee, Baylor College of Medicine
Manali Desai, UTHealth Houston
Maram Museitif, MD Anderson
Maria Fernandez, UTHealth Houston
Mariah Alvarez, UT Austin
Melissa Lopez Varon, MD Anderson
Michelle Payan, Kairos Therapeutic Retreat
Mila Salcedo, MD Anderson
Monalisa Chandra, MD Anderson

Monique Gongora, Texas Southern University
Nghi Tran, UT Austin
Nidhi Nakra, Collective Health Solutions LLC
Olajumoke Oladoyin, UTHealth Houston
Paula Cuccaro, UTHealth Houston
Pracheta Matharasi, Texas Tech HSC El Paso
Rachel Meadows, JPS Health Network
Rebecca Jones, UT San Antonio
Rita Wiltz, Children's Books on Wheels
Rosalind Bello, MD Anderson
Ryan Suk, Emory University
Samantha Paredes, MD Anderson
Sanjida Afroz, UT San Antonio
Sarah Elshanshory, National Ovarian Cancer Coalition
Seema Abbasi, Pakistani Health Board
Sharyn Malatok, Breast Cancer Resource Center
Sheila Edwards, National Ovarian Cancer Coalition
Shontel Minor, Texas AHEC East
Shuang Niu, UT Southwestern
Sonia Escamilla, Texas Tech HSC El Paso
Stella Dike, MD Anderson
Susan Parker, MD Anderson
Telesha Wells, City of Houston
Trisha Amboree, MD Anderson
Yanneth Rivera, UT Austin
Yen-Chi Le, UTHealth Houston
Advisory Boards Members

Roadmap to the Cervical Cancer Elimination Plan

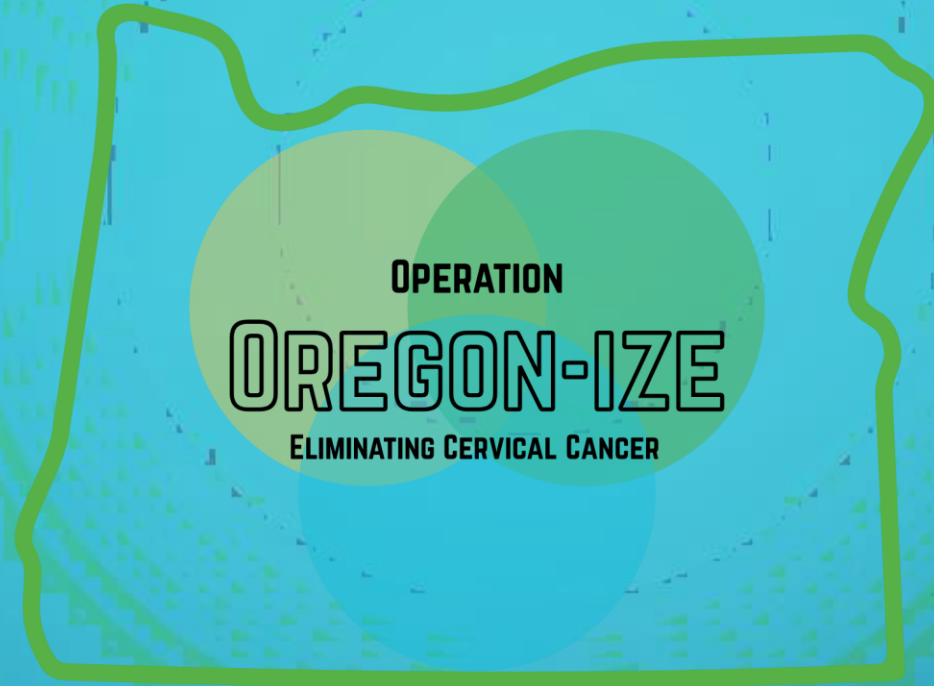




Thank You



KNIGHT
CANCER
Institute



Operation Oregon-ize: Eliminating HPV related cervical cancer in Oregon

Amanda Compadre, MD | Oregon Health and Science University
Tuesday, June 9th, 2026

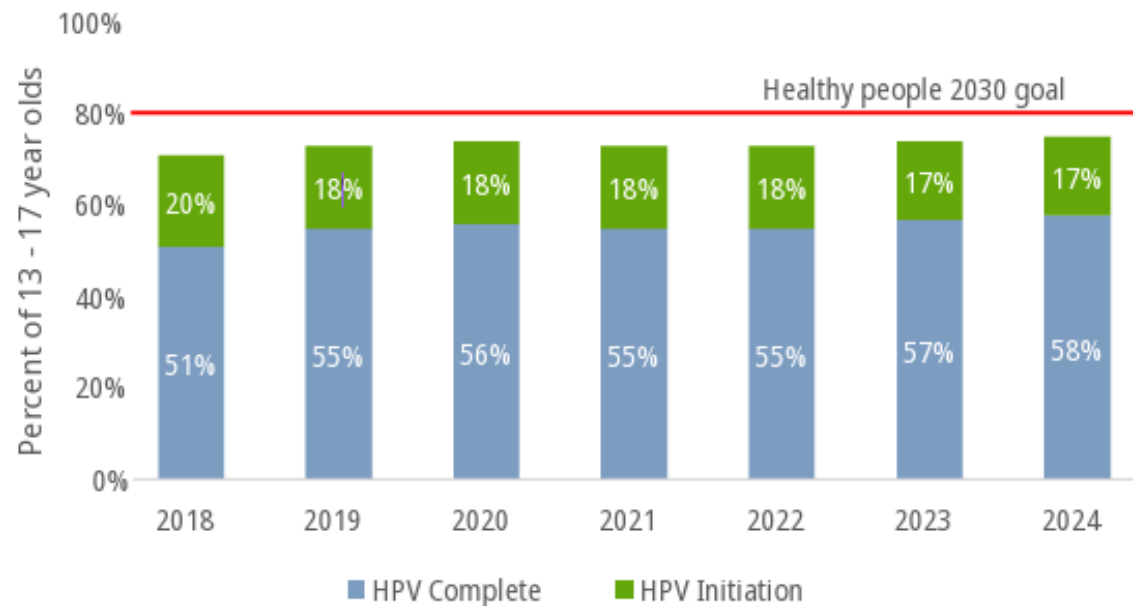
Disclosures

- I have no disclosures to report.

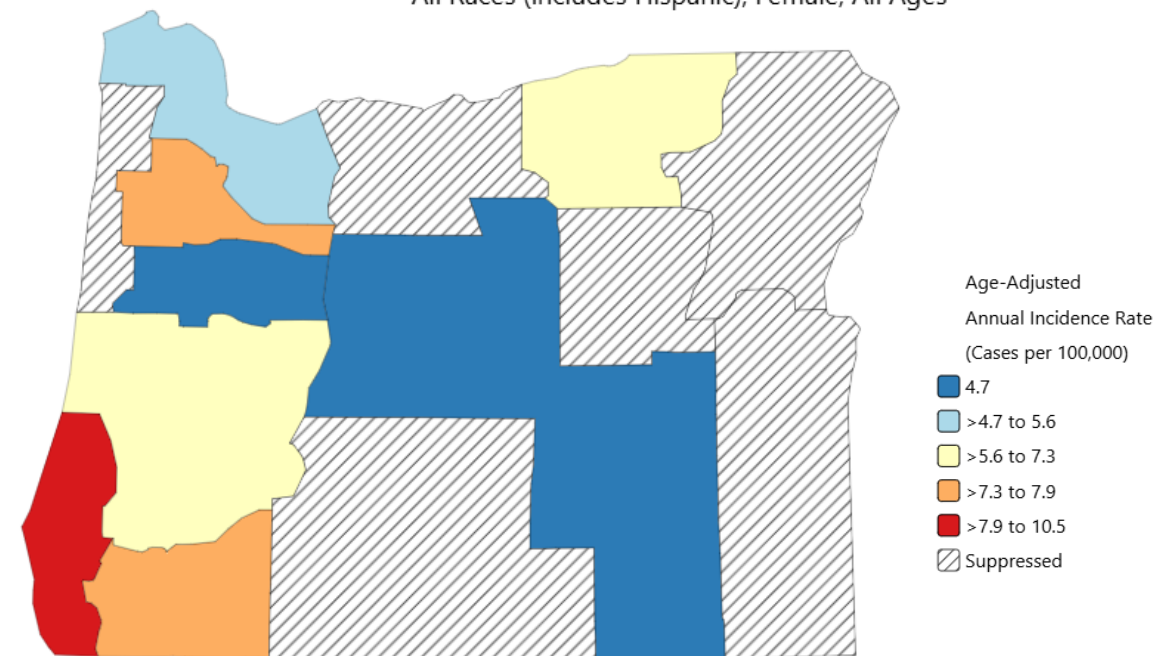
Cervical Cancer in Oregon

- 11.3/100,000 for HPV related cancer incidence (34th/51)
- 6.1/100,000 for cervical cancer incidence (38th/51)
- 1.9/100,000 for cervical cancer mortality (30th/51)

Image 5.6 Oregon HPV immunization rates for 13-17 year olds, 2018-2023

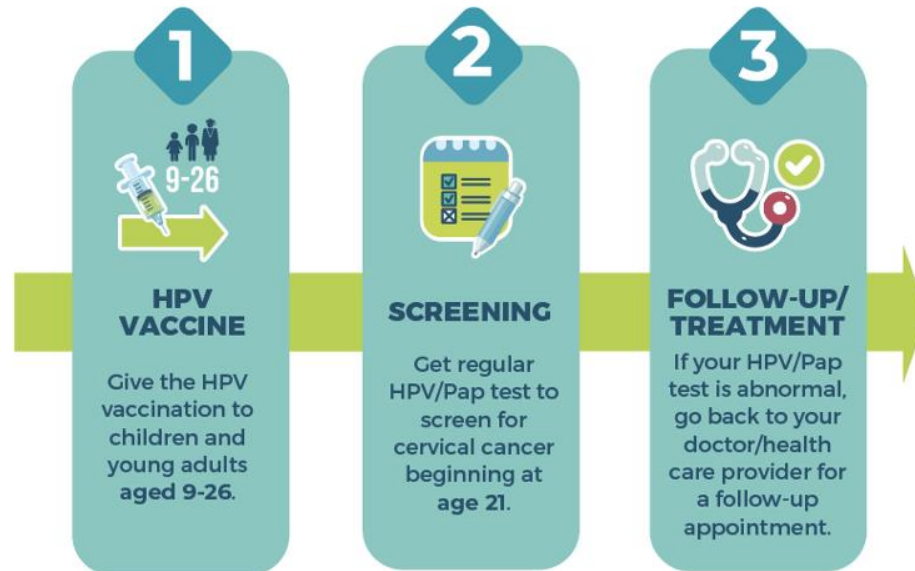
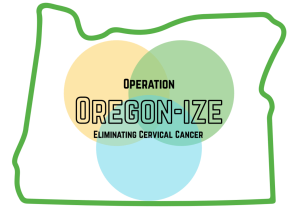


Incidence Rates for Oregon by HSA
Cervix (All Stages[^]), 2018-2022
All Races (includes Hispanic), Female, All Ages



What is Operation Oregon-ize?

- Statewide effort to eliminate cervical cancer in Oregon
- Inspired by Operation WIPE OUT in Alabama
- Facilitated by OHSU Knight Cancer Institute community cancer control specialists



Our team

Program manager



[Paige E. Farris \(she/her\)](#)

Columbia Gorge specialist



[Blanca Flores \(she/her\)](#)

Eastern Oregon specialist



[Carina Garcia \(she/her\)](#)

South Coast specialist



[Sarah Swanson, M.A., CCCE, CHW \(she/her\)](#)

Warm Springs specialist



[Lonnie R. James, M.B.A. \(he/him\)](#)

Willamette Valley specialist



[Elizabeth Dougherty \(she/her\)](#)

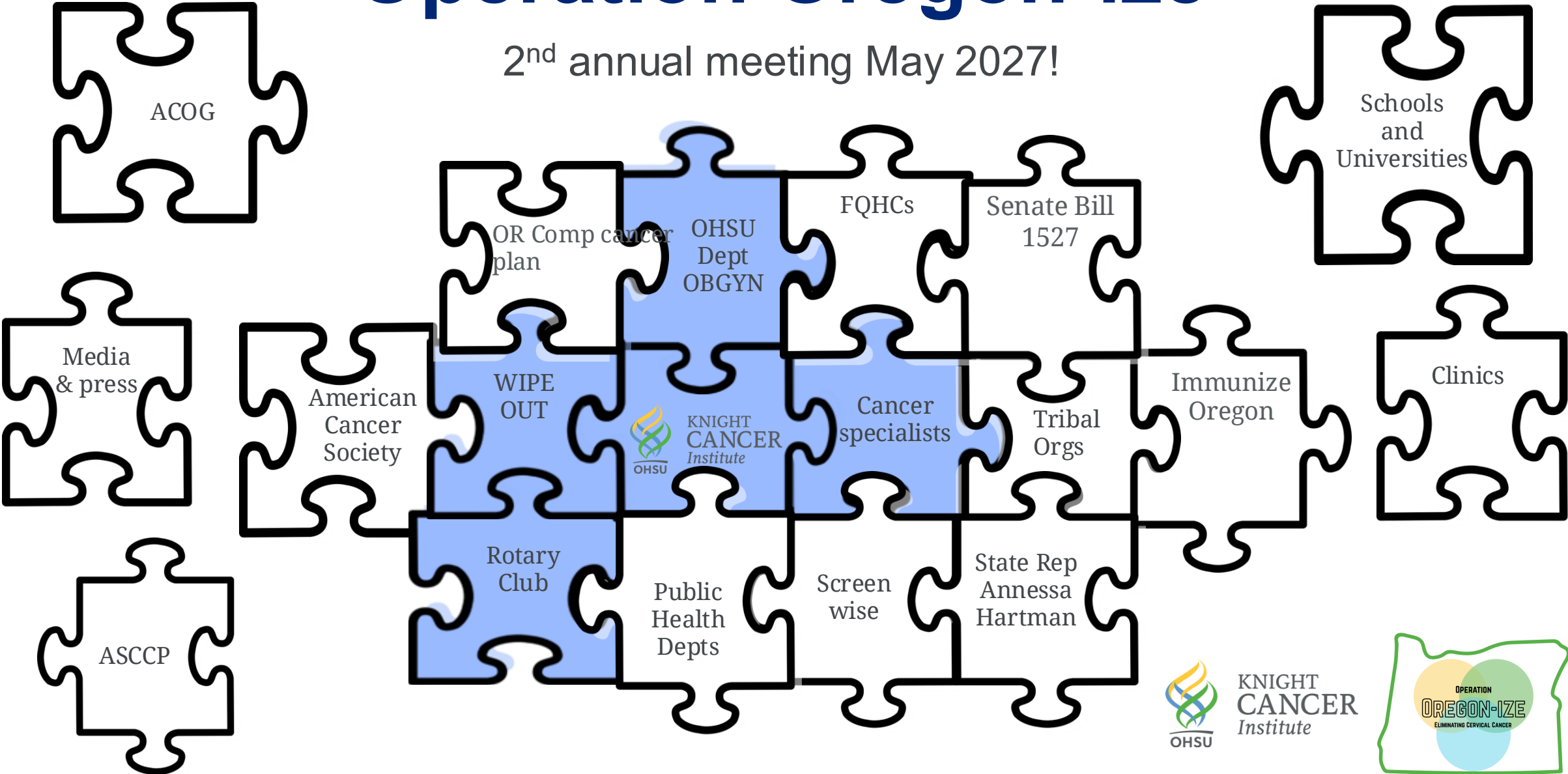
Inaugural Oregon-ize summit

- May 4th-5th, 2026 in Bend, Oregon
- 19 community partners present
- State Representative Annessa Hartmann
- **Day 1:** The big picture, resources, 3 pillars
- **Day 2:** Action plans, sharing ideas, next steps
- Follow up monthly (locally) and quarterly (network-wide)

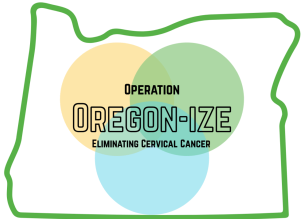


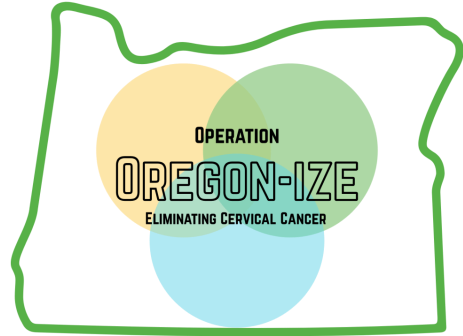
Operation Oregon-ize

2nd annual meeting May 2027!



KNIGHT
CANCER
Institute





Thank You!





Thank You



Questions?